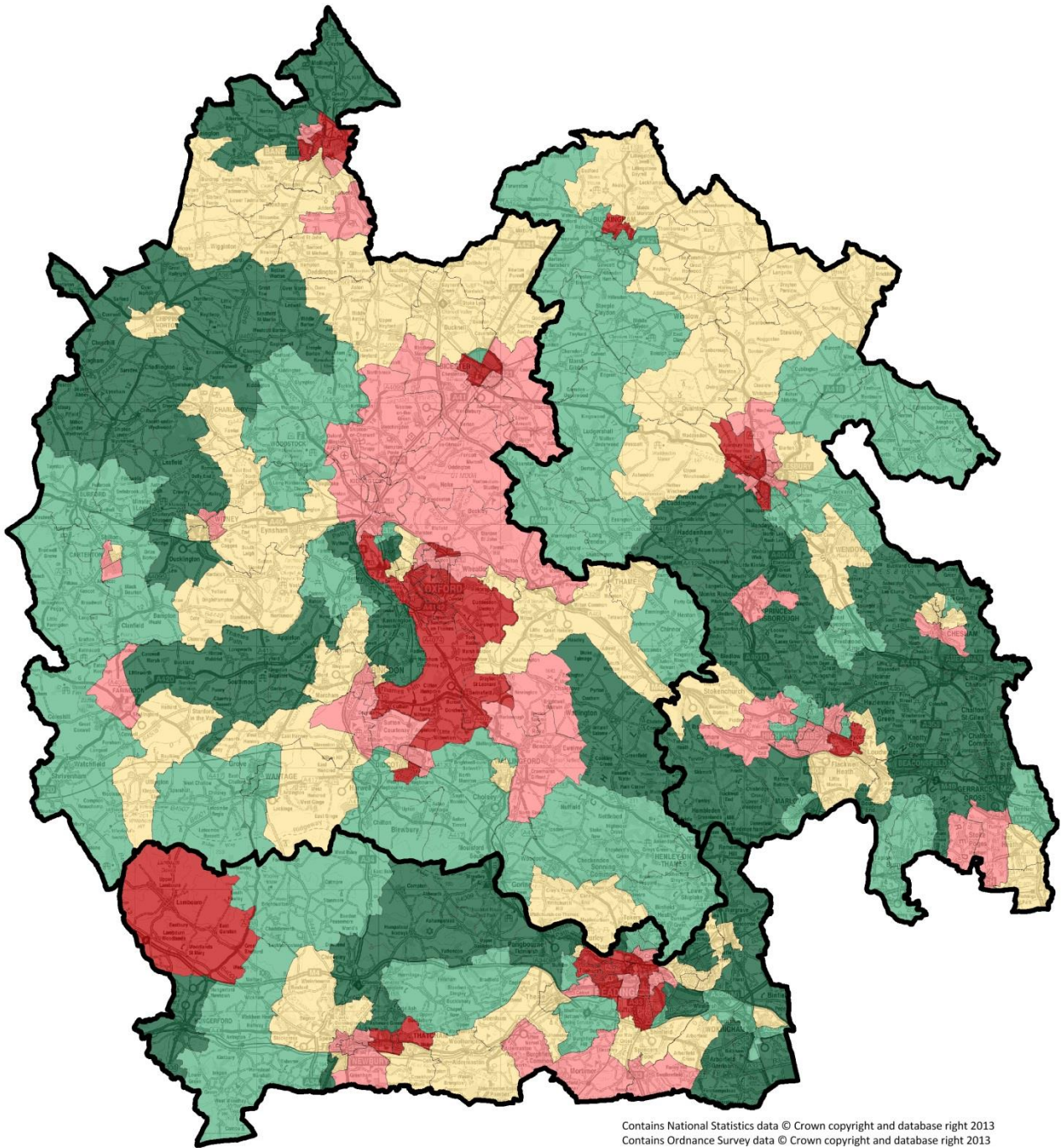


Emergency hospital admissions for COPD



Contains National Statistics data © Crown copyright and database right 2013
Contains Ordnance Survey data © Crown copyright and database right 2013

Produced by Buckinghamshire Public Health (publichealth@buckscc.gov.uk), May17

Emergency COPD admissions by Ward, SAR Population-weighted quintiles

Q1: 12.541 - 38.107
Q2: 38.150 - 48.558
Q3: 48.897 - 63.073
Q4: 63.278 - 93.651
Q5: 94.307 - 219.751

Population-weighted quintile estimates from ward-level data in Local Health.

Quintile thresholds are adjusted to include all wards with tied indicator values. Wards are allocated to the 'better' quintile.

Emergency hospital admissions for COPD

The worst quintile in BOB includes 44 wards (out of 293 wards with recorded data), and makes up 19.9% of the total population. Buckinghamshire has 7 wards in the worst quintile, and the worst ward in BOB, and these are;

- Southcourt (**293**) – worst ranked in BOB
- Walton Court & Hawkslade (292)
- Riverside (286)
- Micklefield (283)
- Buckingham North (280)
- Gatehouse (265)
- Ryemead (253)

[Rank in brackets, where 293 is worst in BOB]

The population in each quintile, for this indicator, is as follows;

Quintile	Population	#Wards
Q1	332,423	72
Q2	338,326	59
Q3	333,065	65
Q4	334,435	53
Q5	331,843	44
Total	1,670,092	293

For this indicator 50,057 people in Bucks are in quintile 5 (15% of the quintile); this is much lower than expected.

Notes on the indicator

No wards in BOB were suppressed for this indicator.

Methodology/Suppression: No suppression required. England age specific admission rates were calculated from all admission episodes with valid MSOA and age coding. Unadjusted expected admissions within each MSOA are calculated by applying age-specific admission rates for England in 2010/11-2014/15 to each MSOA's population.

Standardised Admission Ratio (SAR) = MSOA Observed / Adjusted MSOA Expected admissions * 100

Emergency admissions defined by a three digit primary diagnosis (ICD10) code of J40, J41, J42, J43 or J44.

Ward estimates have been **modelled** from MSOA data.

Definition: Emergency hospital admissions for COPD, indirectly age standardised ratio, all ages, persons.

Source: Hospital Episodes Statistics (HES) and ONS 2010-2014 mid-year population estimates.