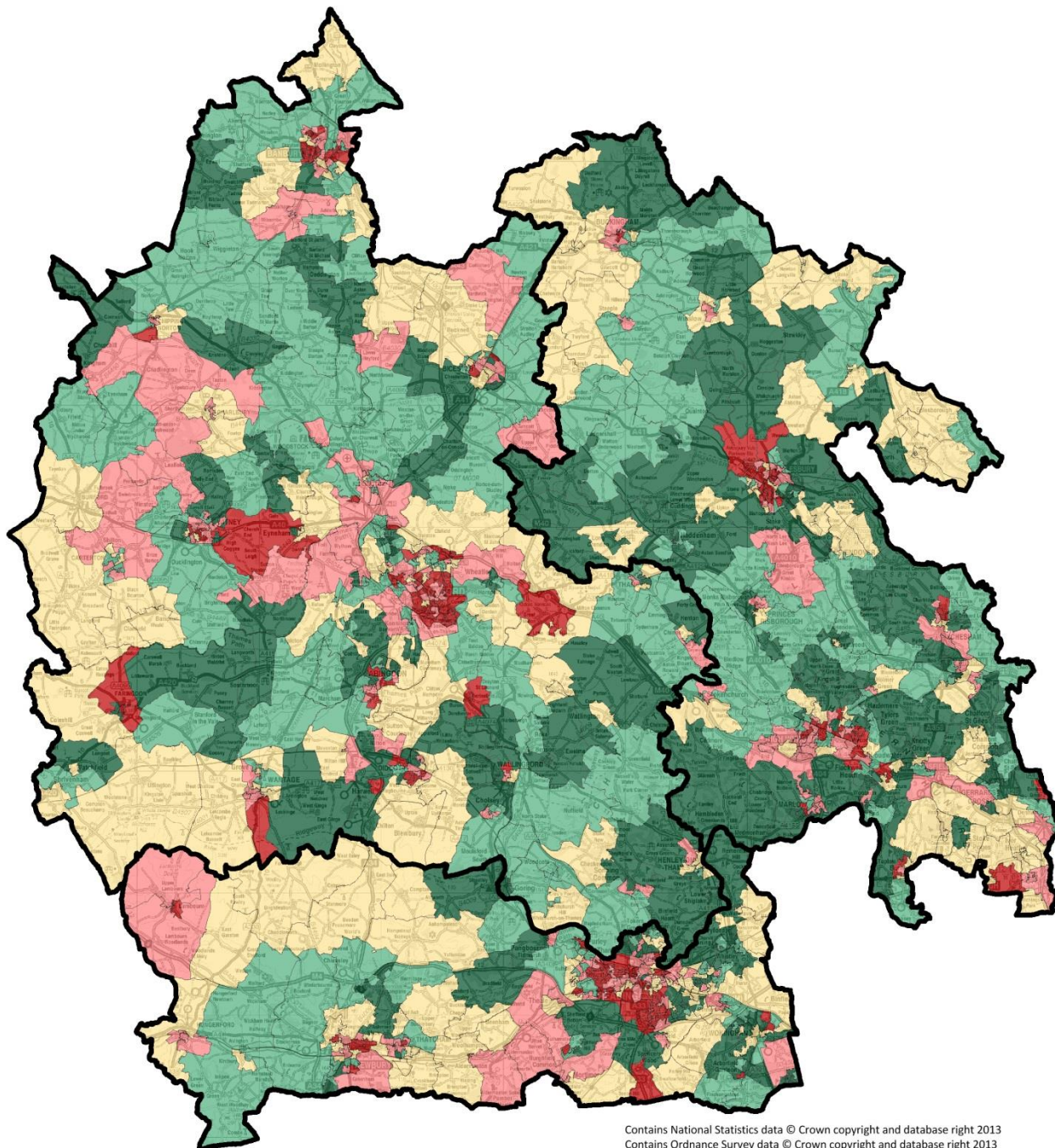


Income Deprivation Affecting Children Index (IDACI) 2015








Contains National Statistics data © Crown copyright and database right 2013
Contains Ordnance Survey data © Crown copyright and database right 2013

Produced by Buckinghamshire Public Health (publichealth@buckscc.gov.uk), May17

Income Deprivation Affecting Children, Proportion, LSOA11

Population-weighted quintiles

	Q1: 0.007 -
	Q2: 0.037 -
	Q3: 0.062 -
	Q4: 0.109 -
	Q5: 0.182 - 0.452

Population-weighted quintile estimates from LSOA11-level data in Department for Communities and Local Government English Indices of Deprivation 2015

The Income Deprivation Affecting Children Index (IDACI) is the proportion of all children aged 0 to 15 living in income deprived families. Income deprived families are defined as families that either receive Income Support or income-based Jobseekers Allowance or income-based Employment and Support Allowance or Pension Credit (Guarantee) or families not in receipt of these benefits but in receipt of Working Tax Credit or Child Tax Credit with an equivalised income (excluding housing benefit) below 60 per cent of the national median before housing costs.

IDACI is a supplementary index produced alongside the Income Deprivation Domain. IDACI covers only children aged 0-15 living in income deprived households. The score is expressed as the proportion of all children aged 0-15 living in income deprived families.

Within the BOB area (Buckinghamshire, Oxfordshire & Berkshire West) there are 1,019 LSOAs which have been ranked and allocated to a quintile.

Each indicator in the analysis is based on **population-based** quintiles so it is not possible to say how many LSOAs *should* be in each quintile. The total under 15 population of BOB, used in this analysis, is approximately 322,000; this would be around 64,400 children in each quintile.

The actual population in each quintile, for this indicator, is as follows;

Quintile	Population	% Population	# LSOAs	% LSOAs
Q1	64,255	20.0%	211	20.7%
Q2	64,474	20.0%	211	20.7%
Q3	64,363	20.0%	212	20.8%
Q4	64,093	19.9%	206	20.2%
Q5	64,523	20.1%	179	17.6%
Total	321,708	100.0%	1,019	100.0%