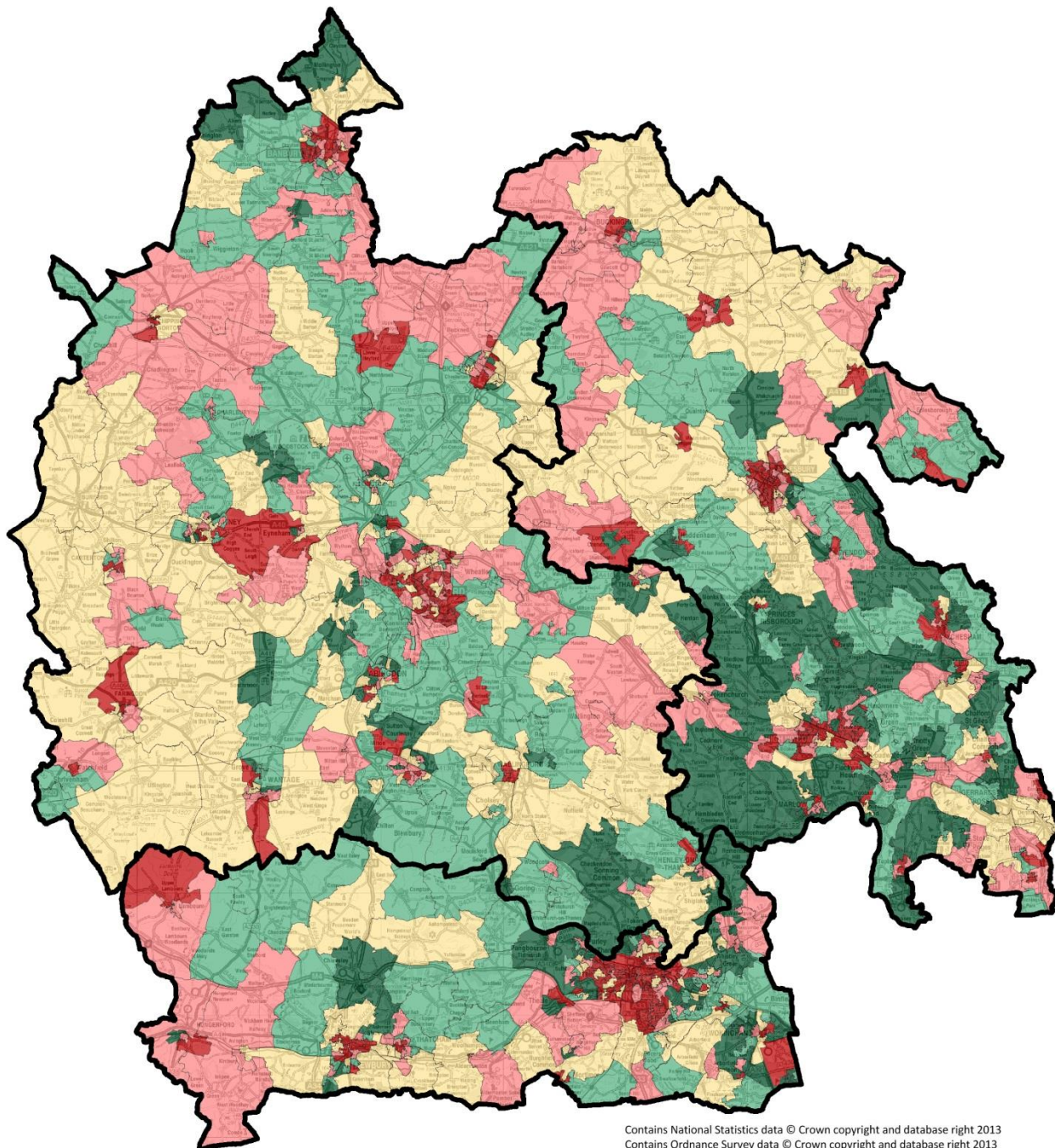


Income Deprivation Affecting Older People Index (IDAOPPI) 2015



Contains National Statistics data © Crown copyright and database right 2013
Contains Ordnance Survey data © Crown copyright and database right 2013

Produced by Buckinghamshire Public Health (publichealth@buckscc.gov.uk), May17

Income Deprivation Affecting Older People, Proportion, LSOA11

Population-weighted quintiles

Q1: 0.008 -
Q2: 0.045 -
Q3: 0.065 -
Q4: 0.089 -
Q5: 0.140 - 0.542

Population-weighted quintile estimates from LSOA11-level data in Department for Communities and Local Government English Indices of Deprivation 2015

The Income Deprivation Affecting Older People Index (IDAOPI) is the proportion of all those aged 60 or over who experience income deprivation. This includes adults aged 60 or over receiving Income Support or income-based Jobseekers Allowance or income-based Employment and Support Allowance or Pension Credit (Guarantee).

IDAOPI is a supplementary index produced alongside the Income Deprivation Domain. IDAOPI covers only those aged 60 and over. The score is expressed as the proportion of those aged 60 and over living in income deprivation.

Within the BOB area (Buckinghamshire, Oxfordshire & Berkshire West) there are 1,019 LSOAs which have been ranked and allocated to a quintile.

Each indicator in the analysis is based on **population-based** quintiles so it is not possible to say how many LSOAs *should* be in each quintile. The total 60+ population of BOB, used in this analysis, is approximately 357,000; this would be around 71,400 people in each quintile.

The actual population in each quintile, for this indicator, is as follows;

Quintile	Population	% Population	# LSOAs	% LSOAs
Q1	71,277	20.0%	178	17.5%
Q2	71,548	20.0%	183	18.0%
Q3	71,306	20.0%	185	18.2%
Q4	71,287	20.0%	213	20.9%
Q5	71,440	20.0%	260	25.5%
Total	356,858	100.0%	1,019	100.0%