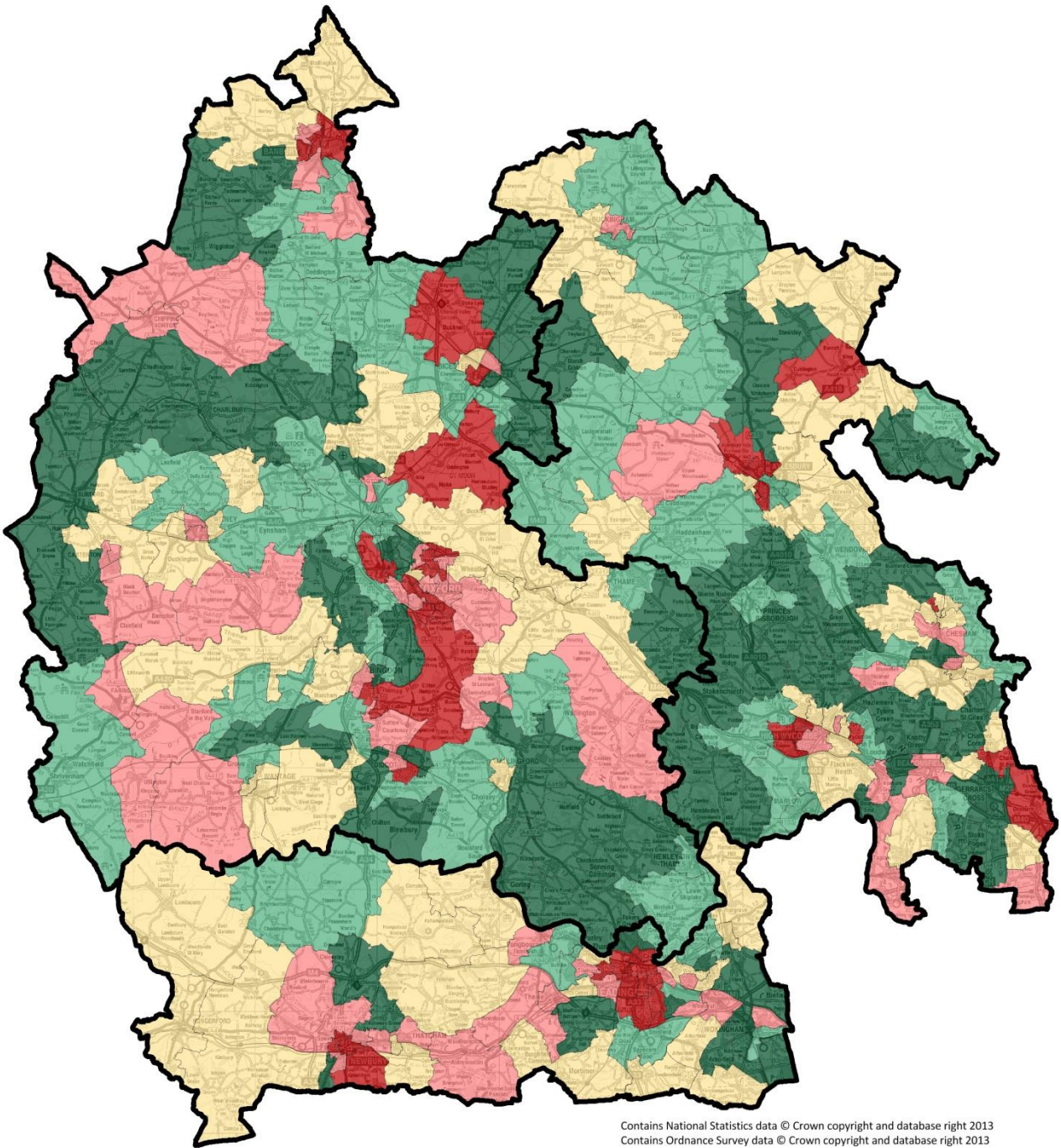







# Deaths from all causes, under 75



Contains National Statistics data © Crown copyright and database right 2013  
Contains Ordnance Survey data © Crown copyright and database right 2013

Produced by Buckinghamshire Public Health (publichealth@buckscc.gov.uk), 03May17

## Deaths from all causes, under 75 by Ward, SMR Population-weighted quintiles

	Q1: 41.667 - 65.728
	Q2: 66.079 - 74.774
	Q3: 74.949 - 85.786
	Q4: 85.841 - 104.520
	Q5: 104.628 - 176.471

Population-weighted quintile estimates from ward-level data in Local Health.

Quintile thresholds are adjusted to include all wards with tied indicator values. Wards are allocated to the 'better' quintile.

## Deaths from all causes, under 75 years

The worst quintile in BOB includes 46 wards (out of 293 wards with recorded data), and makes up 20.0% of the total population. Buckinghamshire has 13 wards in the worst quintile, and these are;

- Gatehouse (286)
- Riverside (282)
- Booker and Cressex (281)
- Walton Court & Hawkslade (278)
- Elmhurst (273)
- Ridgeway (270)
- Central (269)
- Southcourt (267)
- Oakridge and Castlefield (263)
- Micklefield (256)
- Sands (255)
- Denham (250)
- Wing (248)

[Rank in brackets, where 293 is worst in BOB]

The population in each quintile, for this indicator, is as follows;

Quintile	Population	#Wards
Q1	335,053	69
Q2	331,955	58
Q3	336,787	64
Q4	332,403	56
Q5	333,894	46
Total	1,670,092	293

For this indicator 102,791 people in Bucks are in quintile 5 (31% of the quintile); this is as expected.

### Notes on the indicator

No wards in BOB were suppressed for this indicator.

*Methodology/Suppression:* No suppression required. OA deaths and population estimates were aggregated to higher geographies using standard geographical lookup tables obtained from ONS Geography. Expected deaths calculated by applying age-specific death rates for England in 2010-14 to each area's population. SMRs calculated by dividing the observed total deaths in the area by the expected deaths and multiplying by 100.

*Definition:* Standardised mortality ratio for deaths from all causes in people aged under 75 years.

*Source:* Mortality data from ONS annual death extracts and ONS 2010-2014 mid-year population estimates.