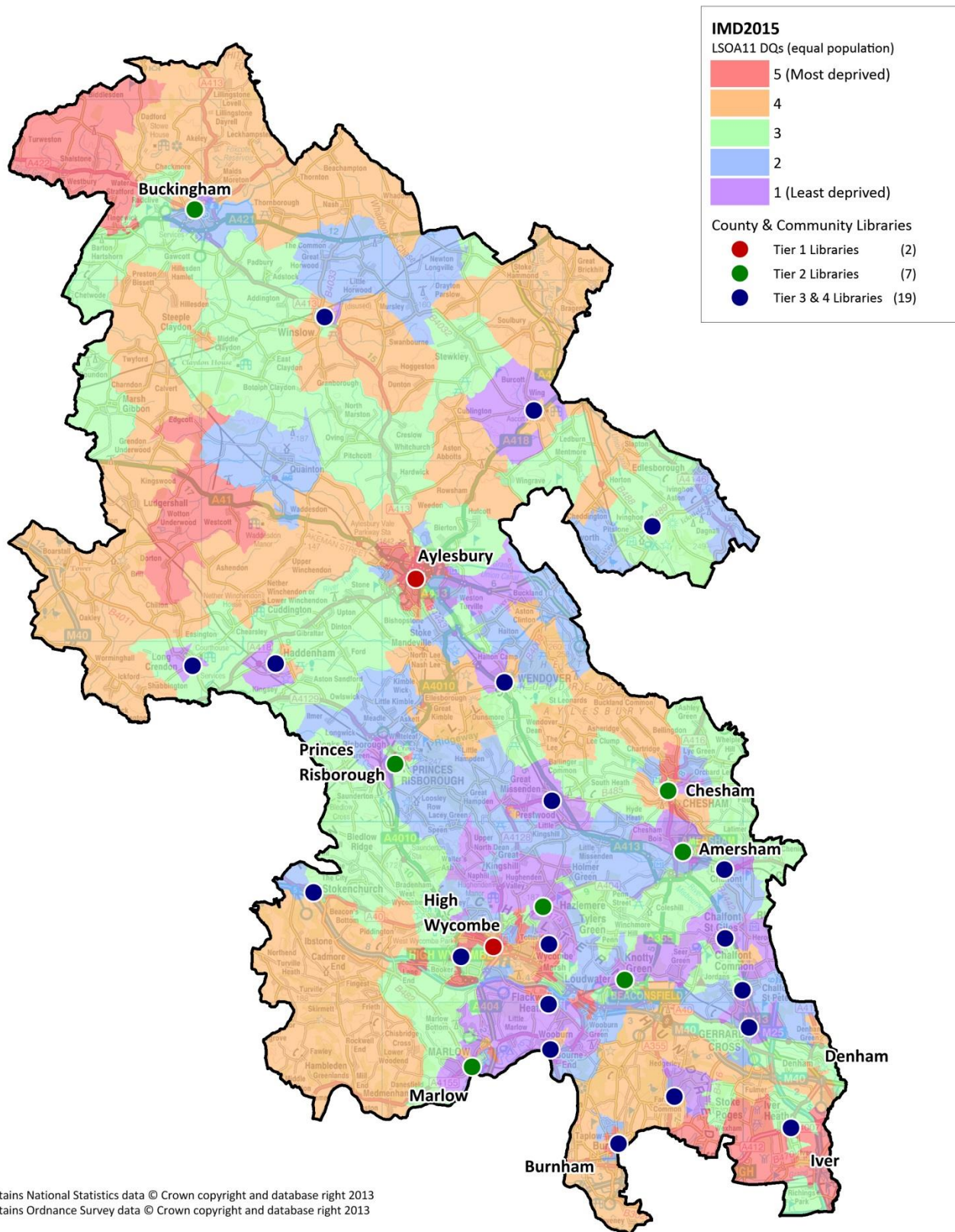


Buckinghamshire County & Community Libraries with Deprivation Quintiles



Contains National Statistics data © Crown copyright and database right 2013
 Contains Ordnance Survey data © Crown copyright and database right 2013

Produced by Buckinghamshire Public Health (publichealth@buckscc.gov.uk), 17Mar17

The libraries in the County are spread evenly across all of the quintiles. However, from the map and underlying postcode data, we can see that both Tier 1 libraries are in DQ5 (the most deprived quintile).

Underlying Data

Source: Library Systems Team, CHASC

Library	Postcode	Tier	DQ
Aylesbury Lending Library	HP20 1UU	1	5
High Wycombe Library	HP11 2DH	1	5
Amersham Library	HP6 5AH	2	1
Beaconsfield Library	HP9 2NJ	2	1
Buckingham Library	MK18 1JP	2	4
Chesham Library	HP5 2JD	2	4
Hazlemere Library	HP15 7PY	2	1
Marlow Library	SL7 1BL	2	3
Princes Risborough Library	HP27 0AA	2	5
Bourne End Library	SL8 5SX	3 or 4	4
Burnham Library	SL1 7HR	3 or 4	4
Castlefield Library	HP12 3LE	3 or 4	5
Little Chalfont Community Library	HP7 9QA	3 or 4	2
Chalfont St. Giles Community Library	HP8 4QA	3 or 4	3
Chalfont St Peter Community Library	SL9 9QA	3 or 4	1
Farnham Common Community Library	SL2 3NL	3 or 4	2
Flackwell Heath Community Library	HP10 9AA	3 or 4	2
Gerrards Cross Library	SL9 8EL	3 or 4	2
Great Missenden Library	HP16 0AL	3 or 4	1
Haddenham Library	HP17 8EE	3 or 4	4
Iver Heath Community Library	SL0 0DA	3 or 4	5
Beacon Villages Community Library	LU7 9EL	3 or 4	3
Long Crendon Community Library	HP18 9AF	3 or 4	1
Micklefield Library	HP13 7HU	3 or 4	5
Stokenchurch Community Library	HP14 3RG	3 or 4	2
Wendover Library	HP22 6DU	3 or 4	3
Wing Community Library	LU7 0NN	3 or 4	1
West Wycombe Community Library	MK18 3DN	3 or 4	3

Count by Deprivation Quintile:

DQ1 (least deprived)	7
DQ2	5
DQ3	5
DQ4	5
DQ5 (most deprived)	6