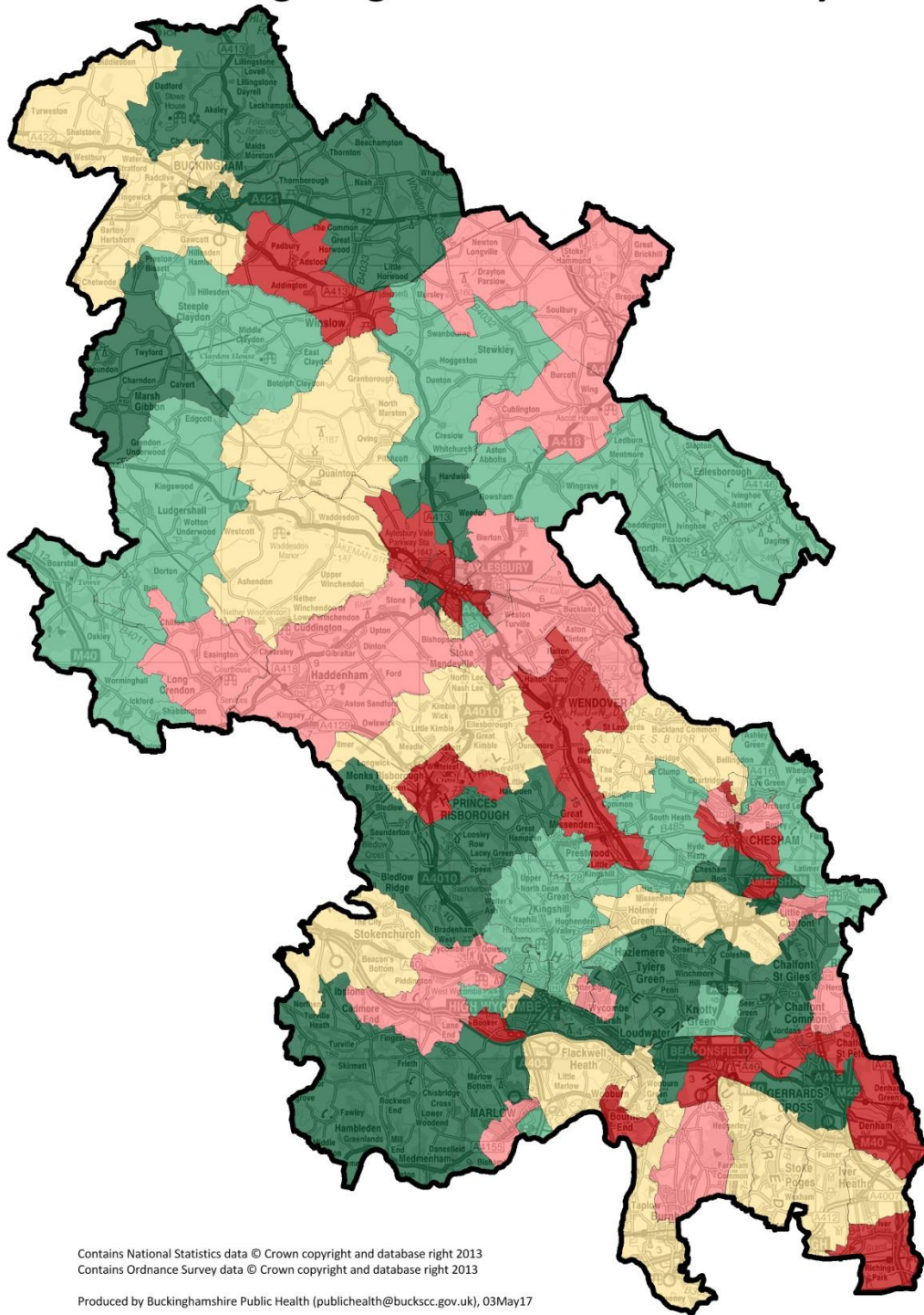
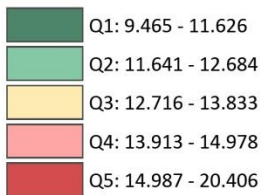


Limiting Long Term Illness or Disability



LLTI or Disability by Ward, % Population-weighted quintiles



Population-weighted quintile estimates from ward-level data in Local Health.

Quintile thresholds are adjusted to include all wards with tied indicator values. Wards are allocated to the 'better' quintile.

For the 'Limiting Long Term Illness or Disability' indicator, the following Buckinghamshire wards are in the worst quintile in Buckinghamshire;

- Amersham-on-the-Hill
- Beaconsfield South
- Booker and Cressex
- Bourne End-cum-Hedsor
- Central
- Central & Walton
- Denham
- Gatehouse
- Gold Hill
- Great Missenden
- Iver Village & Richings Park
- Ridgeway
- Riverside
- Southcourt
- St Mary's and Waterside
- The Risboroughs
- Wendover & Halton
- Winslow

Notes on the indicator

No wards in Bucks were suppressed for this indicator.

Methodology/Suppression: No suppression required. The overall indicator was calculated by aggregating 'activities limited a little' and 'a lot' categories. Limiting long term illness calculated by aggregating up Output Area data.

Definition: Number of people in the 2011 Census who reported that their day-to-day activities were limited because of a health problem or disability which has lasted, or is expected to last, at least 12 months. Reported as a percentage of the total number of respondents to the question.

Source: ONS 2011 Census downloaded from NOMIS standard tables (QS303EW).