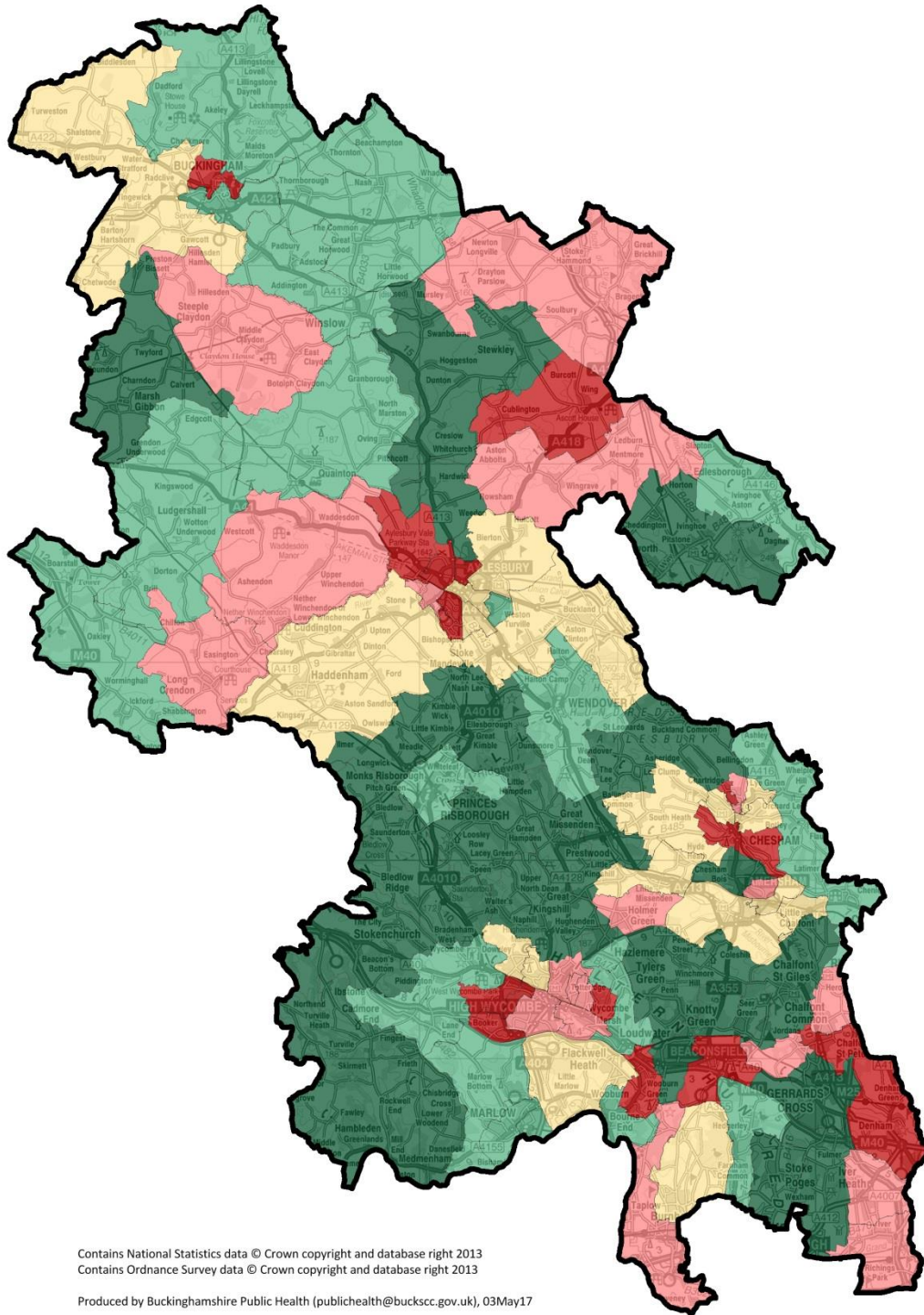
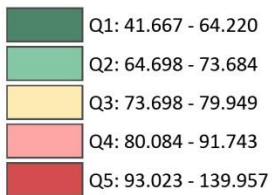


Deaths from all causes, under 75



Deaths from all causes, under 75 by Ward, SMR Population-weighted quintiles



Population-weighted quintile estimates from ward-level data in Local Health.

Quintile thresholds are adjusted to include all wards with tied indicator values. Wards are allocated to the 'better' quintile.

For the 'Deaths from all causes, under 75' indicator, the following Buckinghamshire wards are in the worst quintile in Buckinghamshire;

- Beaconsfield South
- Booker and Cressex
- Buckingham North
- Central
- Denham
- Elmhurst
- Gatehouse
- Micklefield
- Oakridge and Castlefield
- Ridgeway
- Riverside
- Sands
- Southcourt
- St Mary's and Waterside
- The Wooburns
- Walton Court & Hawkslade
- Wing

Notes on the indicator

No wards in Bucks were suppressed for this indicator.

Methodology/Suppression: No suppression required. OA deaths and population estimates were aggregated to higher geographies using standard geographical lookup tables obtained from ONS Geography. Expected deaths calculated by applying age-specific death rates for England in 2010-14 to each area's population. SMRs calculated by dividing the observed total deaths in the area by the expected deaths and multiplying by 100.

Definition: Standardised mortality ratio for deaths from all causes in people aged under 75 years.

Source: Mortality data from ONS annual death extracts and ONS 2010-2014 mid-year population estimates.